

SAFETY PROGRAM

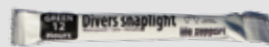
DEPENDABLE, INSTANT
LIGHT ...WHEN LIVES DEPEND
ON IT

6" SNAPLIGHT® LIGHSTICKS (15CM)

With a simple bend, snap, and shake, SnapLight® (15cm) industrial grade, phthalate-free chemical lightsticks provide instant light for all emergency situations. Each SnapLight® creates 360° of illumination, and is visible up to 1 mile.

They are non-toxic, non-flammable, waterproof, and generate no heat or sparks.

Contact us for a customized individual foil to light up your brand. Possible customization of blisters, cardboard boxes, counter display units.



CUSTOM PRINTING AVAILABLE

12 HOURS	PART#	CASE
GREEN	SA8-08076BI	500
	SA8-108076BI	100
YELLOW	SA8-08082BI	500
	SA8-108082BI	100
ORANGE	SA8-08084BI	500
	SA8-108084BI	100
RED	SA8-08078BI	500
	SA8-108078BI	100

8 HOURS	PART#	CASE
BLUE	SA8-08080BI	500
	SA8-108080BI	100
WHITE	SA8-08098BI	500
	SA8-108098BI	100

30 MINUTES	PART#	CASE
YELLOW-HI	SA8-08086BI	500
	SA8-108086BI	100
RED-HI	SA8-08088BI	500
	SA8-108088BI	100
WHITE-HI	SA8-08094BI	500
	SA8-108094BI	100

MADE IN



4" CHEMLIGHT® LIGHTSTICKS (10CM)



Lightweight and handy, 4" ChemLight® lightsticks are recommended for marking routes, clearing areas, vehicle lane night patrol and survival kits

4" ChemLight®	PART#	CASE
6 HR GREEN	9-74780PF	100
6 HR ORANGE	9-76300PF	100
6 HR YELLOW* (*MOQ > 2000 pcs.)	9-74782PF	100
6 HR RED* (*MOQ > 2000 pcs.)	9-74781PF	100
6 HR BLUE* (*MOQ > 2000 pcs.)	9-74783PF	100

10" FLARE ALTERNATIVE® (25CM)



With no batteries required, the 10" SnapLight® offers 360° of illumination. It fits securely in a metal bipod stand to prevent rolling and is visible up to 1 mile (1,6km). SnapLight® lightsticks are maintenance-free, non-toxic, non-flammable, and waterproof.

10" Flare Alternative®	PART#	CASE
2 HR GREEN	9-27049PF	4 x 10-PK
2 HR YELLOW	9-27030PF	4 x 10-PK
2 HR RED	9-27047PF	4 x 10-PK

12" SNAPLIGHT® LIGHTSTICKS (30CM)



Widely used by Law Enforcement, mining and utility companies, the 12" SnapLight provides 3 times the brightness of a 6" lightstick. Individually wrapped in foil packaging.

12" SnapLight®	PART#	CASE
12 HR GREEN	9-2705101PF	25

15" IMPACT® LIGHTSTICKS (40CM)



Also available in a non IMPACT® version, the 15" lightstick is the only one that activates on impact, providing instant illumination. When near gas or oil, or any combustible materials, the 15" IMPACT® stick is a dependable source of emergency lighting that is safe for use in all environments. Recommended for confined space lighting, vehicle repairs, building searches, bundle drops...

15" IMPACT® (2 End Rings)	PART#	CASE
12 HR GREEN	9-87090PF	4 x 5-PK
12 HR YELLOW	9-87110PF	4 x 5-PK
12 HR RED	9-87120PF	4 x 5-PK
8 HR BLUE	9-87100PF	4 x 5-PK
8 HR WHITE	9-87130PF	4 x 5-PK
5 MIN ORANGE-HI	9-87150PF	4 x 5-PK
15" Non-IMPACT (1 End Ring)	PART#	CASE
12 HR GREEN	9-03620PF	4 x 5-PK
12 HR YELLOW	9-06130PF	4 x 5-PK
12 HR RED	9-06120PF	4 x 5-PK
8 HR BLUE	9-06140PF	4 x 5-PK
8 HR WHITE	9-03670PF	4 x 5-PK

1 END RING NON-IMPACT 2 END RING IMPACT

S.O.S.®

When the user spins the signaling device on its lanyard, it forms a distinctive circle pattern visible up to 3 miles (4,8km) from the air and 1 mile (1,6km) on land. Ideal for rescue operations.

S.O.S.®	PART#	CASE
8 HR GREEN	9-42740PF	50
5 MIN ORANGE ULTRA-HI*	9-68260PF	50

*Available with MOQ of 100 pcs.



Personnel Marker Light PML®

Coast Guard approved, the PML® is the superior clip-on identifying signal for rescue-at-sea or evacuation operations. Designed to be lightweight, waterproof, and buoyant, the PML® is the ideal emergency locator.

PML®	PART#	CASE
8 HR GREEN	9-80770PF	50

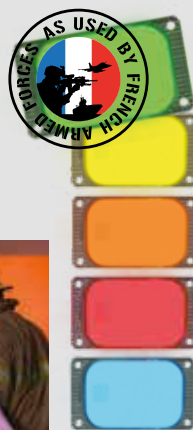


MARKERS

MARK THE WAY TO SAFETY

ADHESIVE PATCH VISIPAD

Self-adhesive, rectangular and flat, the VisiPad® weighs less than a traditional 6" SnapLight®, but with the same overall surface area. The hook and hole feature allows VisiPad® to be hung. Customize your VisiPad® with monocolour printing for MOQ>1000 pcs. Additional technical fees apply.



Custom Printing Available



BEND



SQUEEZE

VISIPAD	PART#	CASE
10 HR GREEN	9-27601PF	25
10 HR YELLOW	9-27631PF	25
10 HR ORANGE	9-27651PF	25
10 HR RED	9-27611PF	25
10 HR BLUE	9-27641PF	25

MOQ > 25 pcs.

LIGHTSHAPE® CIRCLE MARKERS

The self-adhesive 3" LightShape® Markers (8cm) can be used for medical triage, evacuation procedures, trail marking or as a personal protective equipment. Peel the paper backing and adhere to any surface.



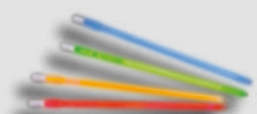
LightShape®	PART#	CASE
4 HR GREEN	9-50860PF	10 x 10-PK
4 HR YELLOW	9-42710PF	10 x 10-PK
4 HR ORANGE	9-42730PF	10 x 10-PK
4 HR RED	9-42720PF	10 x 10-PK
4 HR BLUE	9-42700PF	10 x 10-PK



FLEXBANDS

The 7½" FlexBand is the ideal emergency marker. FlexBands can be placed on wrists, stretchers, door handles... Combine FlexBands together to mark larger areas.

FLEXBANDS	PART#	CASE
6 HR GREEN	9-85990PF	12 x 3-PK
6 HR ORANGE	9-85970PF	12 x 3-PK
6 HR Lt RED	9-85960PF	12 x 3-PK
6 HR BLUE	9-85980PF	12 x 3-PK



ALL LIGHTSTICKS ACCESSORIES

INCREASED PERFORMANCE

DIRECTIONAL HANDLE

Lightweight and durable, the handle is ideal for police officers and road construction crews who require a highly visible light for signaling or directing traffic.

ACCESSORY	PART#	CASE
DIRECTIONAL HANDLE	9-33450	25



CONE ADAPTOR

Cone Adaptors can be used on their own or placed on top of a safety cone for improved visibility. They are stackable and easily stored.

ACCESSORY	PART#	CASE
CONE ADAPTOR	9-27103	25



MAGNETIC BASE

Allows a lightstick to be attached to any steel surface for maximum visibility.

MAGNETIC BASE	PART#	CASE
SAFETY GRADE	SA9-33460	12
MILITARY GRADE	9-33460	25



LIGHTSTATION®

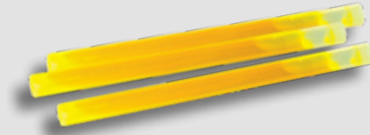
With an easy to locate glowing photoluminescent label on the front cover, LightStation® provides assurance that a safe light will be available when the power goes out.



LIGHTSTATION® Model 20

Designed with a heavy-duty molded plastic case. When the front cover is pulled open, one SnapLight® (25 cm) activates, leaving 19 SnapLight® lightsticks for individuals to carry and use as light sources while evacuating. Available in Red.

LightStation®	PART#	CASE	10" REFILL	PART#	CASE
Model 20 red	9-00364	4	Yellow 4 HR*	9-00351PF	4 x 10-PK
SnapLight® lightsticks not included in LightStation®.			Yellow 4 HR**	9-00352PF	10 x 20-PK
			Tamper Pin	9-00354	25



*MOQ > 40pcs (4 x 10pcs)

** MOQ > 200pcs (10 x 20pcs)

Other colours possible upon request with MOQ, please contact us.

PHOTOLUM PLATE



Equipped with an adhesive backing and pre-drilled holes, the Photolum Plate is easy to install and operate. Provide cost effective emergency lighting wherever it is needed.

PHOTOLUM PLATE	PART#	CASE
With 2x6" SnapLight® Yellow 30 MIN	LTD9-CABINPACKA	1
With 2x6" SnapLight® Green 12 HR	LTD9-CABINPACKB	1

S.E.E.® SYSTEM



Install the S.E.E.® System with glowing photoluminescent label along a designated evacuation route to provide a safe, clearly lit path throughout a building. When the front cover is pulled open, two 6" SnapLight® lightsticks activate, providing instant light to prevent slips, trips and falls. Includes 2-hour Yellow high-intensity SnapLight® (15cm) lightsticks..

S.E.E.® System	PART#	CASE
S.E.E.® Box with 2 SnapLight®****	9-08500PF	10
Refill 6" Yellow 2 HR****	SA8-08505PF	100
Tamper Proof Pins	4-2101	50

***Includes Mounting Hardware & 2 Pins/PK. Sold as 10 Pack System. Not Packaged for Individual Sale.

****Pack 10x10pcs, includes 50 Expiration Date Labels & 50 Tamper Pins.

CYFLECT®

Cyflex® is a range of retro-reflective and photoluminescent material for safe evacuation and personal protection. Reflective and self-luminous tapes, ideal for use on signs, displays, buildings, steps, stairs, and doorways. Available as sew on or adhesive in a variety of sizes. Custom colors, patterns, designs and insignia are available upon request.

CYFLECT®



Honeycomb tapes and rolls - adhesive or to sew on

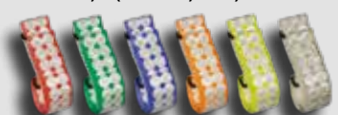
Cyflex Roll	CODE ART.
1,5" x 5' roll (3,8cm x 1,52m) adhesive	9-30014
1" x 150' roll (2,5cm x 45m) sew on	9-30007
1" x 150' roll (2,5cm x 45m) adhesive	9-30006
1,5" x 150' roll (3,8cm x 45m) sew on	9-30008
1,5" x 150' roll (3,8cm x 45m) adhesive	9-30011
2" x 150' roll (5cm x 45m) sew on	9-30009
2" x 150' roll (5cm x 45m) adhesive	9-30012



PT-BELT®

With velcro and buckle strap, adjustable

PT-Belt™	CODE ART.
White belt 2" x 5,5' (5cm x 1,68m)	9-3012509
Blue belt 2" x 5,5' (5cm x 1,68m)	9-3012509B
Green belt 2" x 5,5' (5cm x 1,68m)	9-3012509G
Orange belt 2" x 5,5' (5cm x 1,68m)	9-3012509O
Red belt 2" x 5,5' (5cm x 1,68m)	9-3012509R
Yellow belt 2" x 5,5' (5cm x 1,68m)	9-3012509Y



SAFETY INSTRUCTIONS

Our products are non dangerous, non explosive, non flammable, non hazardous, non toxic. They do not generate sparks, heat or flame. No maintenance, nor batteries are required. They are waterproof (can be used under water) and buoyant.

Keep in original wrap until ready to use. Do not puncture or cut product. Ingredients may stain clothing or furniture. Contact with skin or eyes may cause temporary discomfort. In case of skin or eyes contact, rinse thoroughly with water. Do not drink or ingest contents. Do not leave product in direct sunlight or expose to high temperatures. After use, dispose of in refuse container.

Shelf-life depends of the product but can last up to 5 years from the date of manufacture indicated on the foil/case.

Please keep the product in its foil before use or in its box to prevent light exposure otherwise it may affect the product's efficiency.